

# FIELD REPLACEABLE UNIT DOCUMENTATION

## **Satellite™** **TE2000**

---

### GENERAL INFORMATION

---

#### **Tools Required for Proper Disassembly and Reassembly:**

1. Phillips Screwdriver (Size 0&1)
2. Flat head Screwdriver
3. Security Torx (Size 7)
4. Case Separator
5. ESD Wrist Strap
6. ESD mat
7. Tweezers

Before attempting any of the following procedures, make sure that the main battery and AC adaptor is not connected to the unit and the environment in which you are working on is protected from Electro-Static Discharge(ESD).

---

# **TOSHIBA**

**Tough Enough for Today's World.**

Download service manual and resetter printer at <http://printer1.blogspot.com>

# FIELD REPLACEABLE UNIT DOCUMENTATION

## **Satellite<sup>TM</sup>** **TE2000**

---

### **TABLE OF CONTENTS:**

- 1. BATTERY PACK REMOVAL**
- 2. OPTIONAL PC CARD REMOVAL**
- 3. SELECT BAY REMOVAL**
- 4. CD-R/DVD-ROM DRIVE DISASSEMBLY**
- 5. MEMORY MODULE REMOVAL**
- 6. MODEM BOARD REMOVAL**
- 7. HDD REMOVAL**
- 8. KEYBOARD REMOVAL**
- 9. WIRELESS LAN CARD REMOVAL**
- 10. TOP COVER REMOVAL**
- 11. COOLING MODULE REMOVAL**
- 12. CPU REMOVAL**
- 13. RTC BATTERY REMOVAL**
- 14. POWER SUPPLY BOARD REMOVAL**
- 15. SOUND BOARD REMOVAL**
- 16. SYSTEM BOARD REMOVAL**
- 17. MEMBRANE SWITCH REMOVAL**
- 18. SPEAKERS REMOVAL**
- 19. 14.1" DISPLAY MASK REMOVAL**
- 20. FL INVERTER AND 14.1" LCD REMOVAL**

---

# **TOSHIBA**

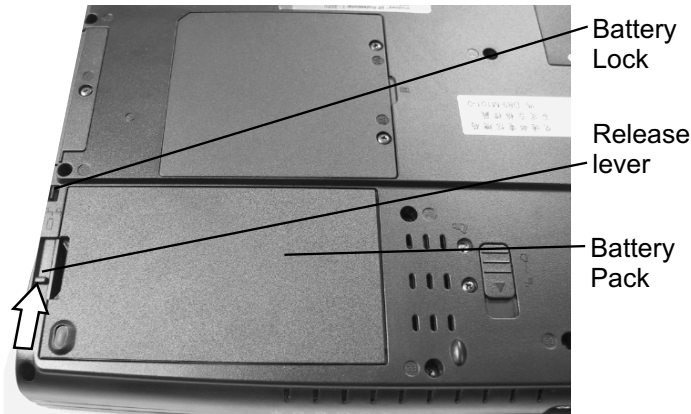
**Tough Enough for Today's World.**

Download service manual and resetter printer at <http://printer1.blogspot.com>

# FIELD REPLACEABLE UNIT DOCUMENTATION

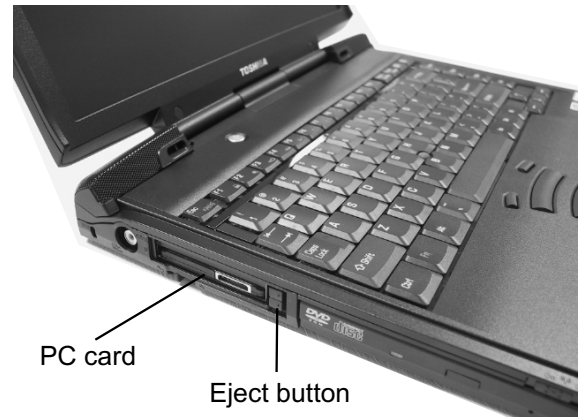
## Satellite™ TE2000

### BATTERY PACK REMOVAL



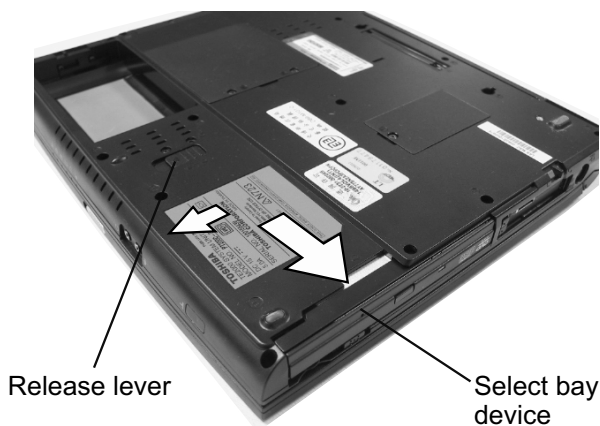
1. Turn the computer upside down as shown.
2. Slide the **battery lock** to unlock position.
3. Slide **battery release lever** in the direction of the arrow.
3. Lift out the **battery**.

### OPTIONAL PC CARD REMOVAL



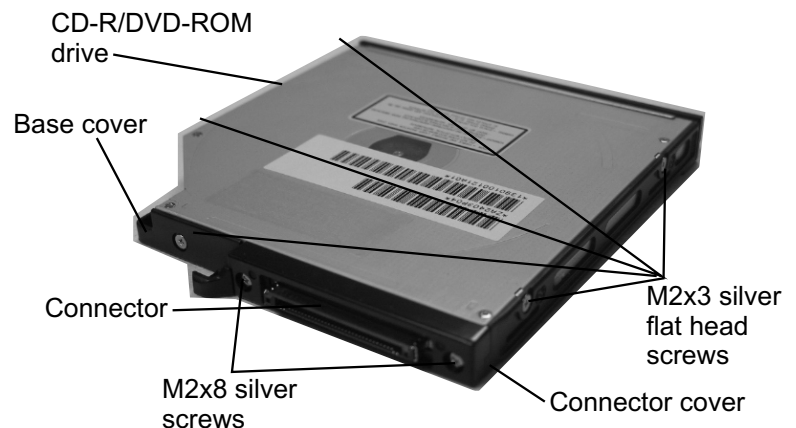
1. Press the **eject button** of the PCCard you want to remove.
  2. Press the extended eject button to pop the **PC card** out.
  3. Grasp the **PC card** and remove it.
- Note: Before removing any PC Card device, make sure it is "STOPPED" in the PC Card manager.

### SELECT BAY REMOVAL



1. Turn the computer upside down.
2. Slide the **release lever** in the direction of the arrow.
3. Pull out the **select bay device** in the direction of the arrow.

### CD-R/DVD-ROM DRIVE DISASSEMBLY



1. Remove **five M2x3 silver flat head screws** securing the base cover and lift out the **cover**.
2. Remove **two M2x8 silver screws** securing the connector cover.
3. Remove the **connector cover** and the **connector** from the CD-R/DVD-ROM drive.

# TOSHIBA

**Tough Enough for Today's World.**

Download service manual and resetter printer at <http://printer1.blogspot.com>

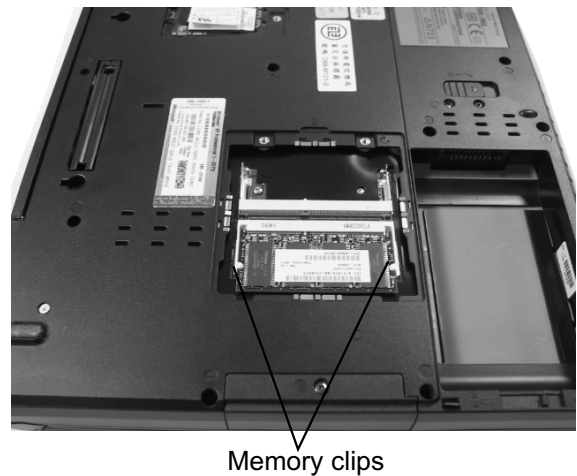
# FIELD REPLACEABLE UNIT DOCUMENTATION

## Satellite™ TE2000

### MEMORY MODULE REMOVAL

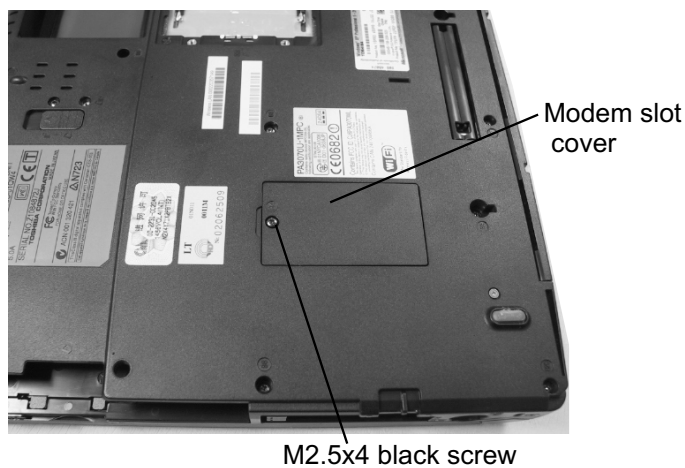


1. Turn the computer upside down.
2. Remove **two M2.5x4 black screws** securing the memory cover.
3. Lift out the **memory slot cover**.

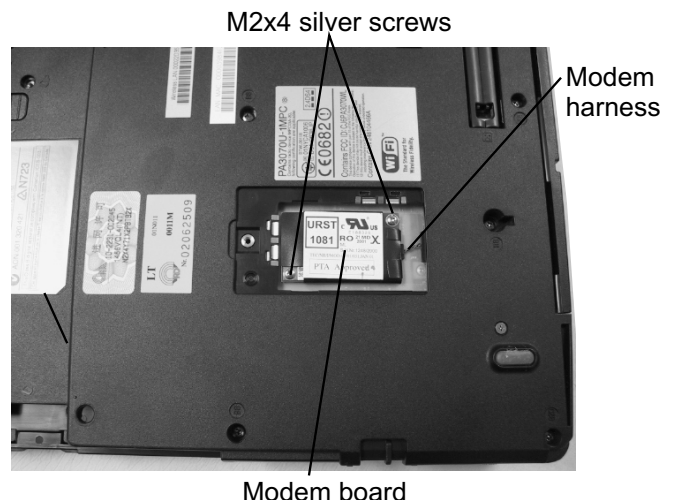


4. Spread the **memory clips** outward and pull the **memory module** out of the connector on a 45 degree angle.

### MODEM BOARD REMOVAL



1. Remove **one M2.5x4 black screw** securing the modem slot cover.
2. Insert your finger nail or the case separator into the notched side of the cover and lift up to release the two latches securing the left side of the modem slot cover.



3. Disconnect the **modem harness** from the modem board.
4. Remove **two M2x4 silver screws** securing the modem board.
5. Lift up the **modem board** to disconnect it from the system board.

# TOSHIBA

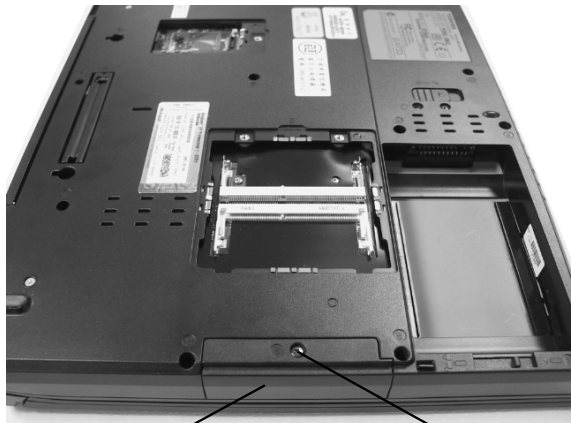
**Tough Enough for Today's World.**

Download service manual and resetter printer at <http://printer1.blogspot.com>

# FIELD REPLACEABLE UNIT DOCUMENTATION

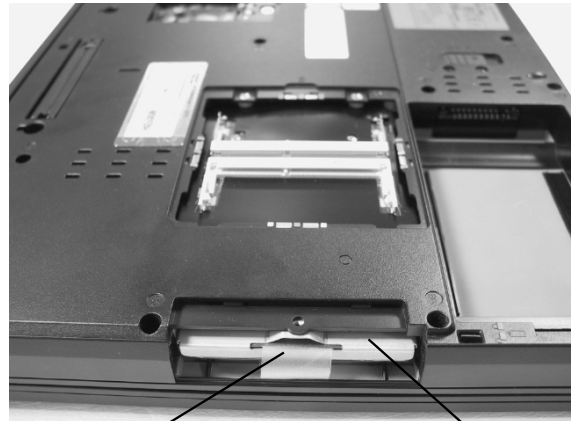
## Satellite™ TE2000

### HDD REMOVAL



HDD cover M2.5x6 black screw

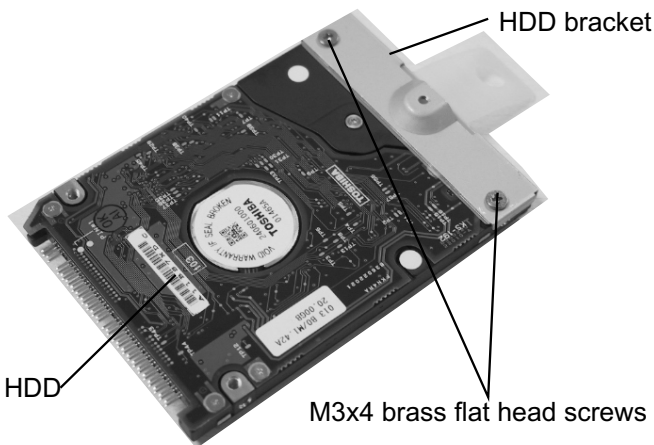
1. Turn the computer upside down.
2. Remove **one M2.5x6 black screw** securing HDD cover.
3. Remove the **HDD cover**.



Plastic Tab HDD pack

4. Unfold the **plastic tab** and pull to remove the HDD from the bay.

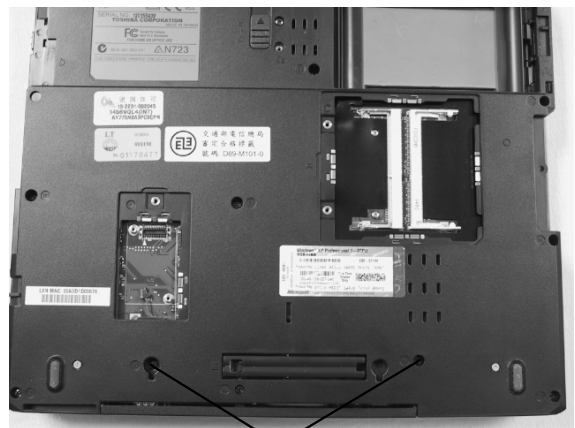
### HDD REMOVAL



HDD bracket  
HDD  
M3x4 brass flat head screws

5. Remove **two M3x4 brass flat head screws** securing the HDD to the bracket and remove the HDD bracket.

### KEYBOARD REMOVAL



M2.5x12 black screws

1. Turn the computer upside down.
2. Remove **two M2.5x12 black screws** securing the keyboard holder.

# TOSHIBA

**Tough Enough for Today's World.**

Download service manual and resetter printer at <http://printer1.blogspot.com>

# FIELD REPLACEABLE UNIT DOCUMENTATION

## Satellite<sup>TM</sup> TE2000

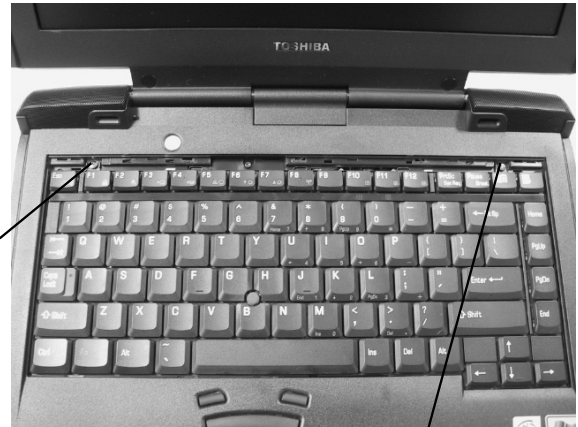
### KEYBOARD REMOVAL



Keyboard

Keyboard lock

Keyboard holder



M2.5x2.6 black screws

1. Turn the computer right side up and open the display panel.
2. Using the **case separator**, unlatch the **keyboard holder** at the top of the **keyboard**.

3. Remove **one M2.5x2.6 black screws** securing the keyboard.
4. Slide the **keyboard lock** upward to release the keyboard.

### KEYBOARD REMOVAL



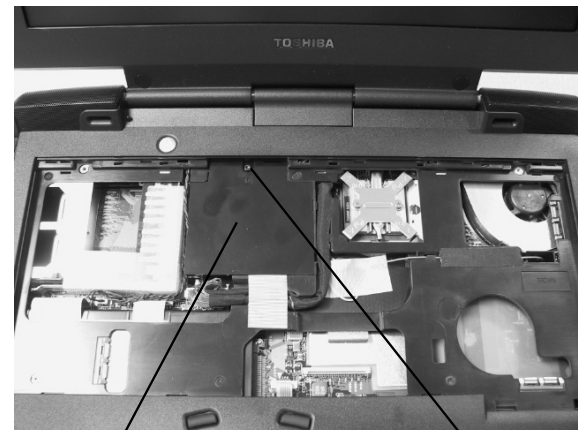
Keyboard

Keyboard cable

PJ445

5. Lift out the **keyboard** and set it as shown above.
6. Disconnect the **keyboard cable** from **PJ445** on the system board.

### WIRELESS LAN CARD REMOVAL



Mini PCI cover

M2.5x4 security torx screw

1. Remove **one M2x4 security torx screw** securing the mini PCI cover and lift out the cover.

# TOSHIBA

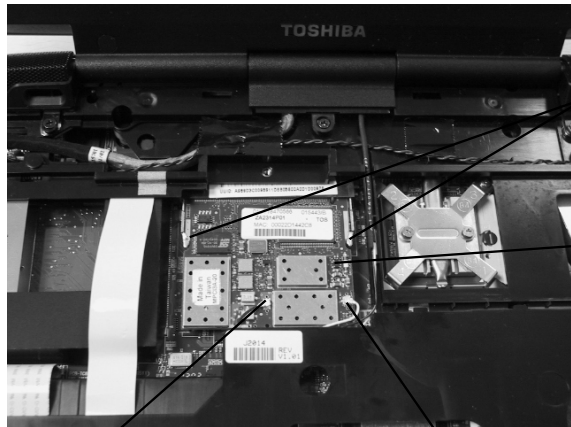
**Tough Enough for Today's World.**

Download service manual and resetter printer at <http://printer1.blogspot.com>

# FIELD REPLACEABLE UNIT DOCUMENTATION

## Satellite™ TE2000

### WIRELESS LAN CARD REMOVAL



Mini-PCI  
connector  
clips

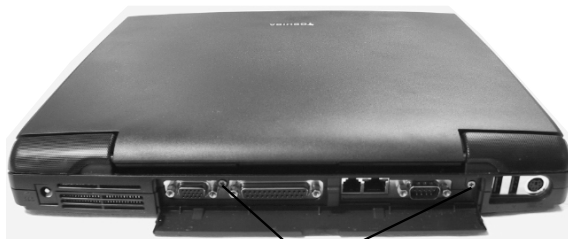
Wireless  
LAN card

White coax cable

Black coax cable

2. Disconnect the **black** and **white coax** from the wireless LAN card.
3. Spread the **Mini-PCI connector clips** and pull the **Wireless LAN card** out of the connector about 45 degree angle.

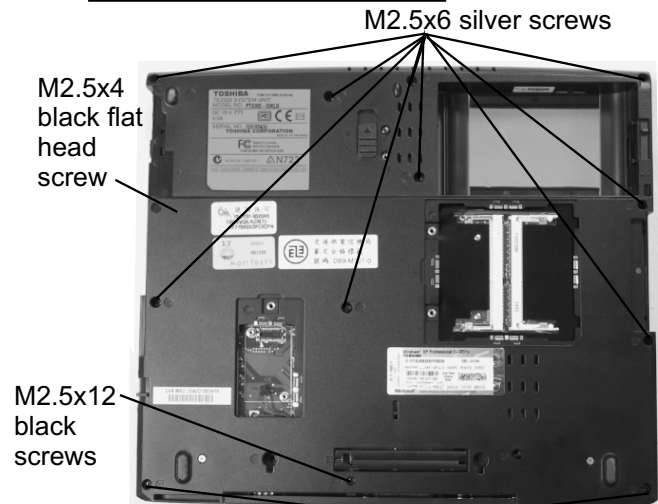
### TOP COVER REMOVAL



M2.5x4 silver screws

2. Turn the computer right side up with the rear facing you.
3. Remove **two M2.5x4 silver screws** securing the top cover.
4. Open the display panel.

### TOP COVER REMOVAL



M2.5x6 silver screws

M2.5x4  
black flat  
head  
screw

M2.5x12  
black  
screws

M2.5x20 black screws

1. Turn the computer upside down and remove the following screws:
  - 9 M2.5x6 black screws
  - 1 M2.5x4 black flat head screw
  - 2 M2.5x20 and 1 M2.5x12 black screws

Rubber seals



Mask seals

5. Remove **two mask seals** and **four rubber seals** on the display mask using a pair of fine-tipped tweezers.
6. Remove **two M2.5x6 black screws** and **four M2x6 silver flat head screws** securing the display mask.
7. There are **23 latches** securing the **display mask**. Carefully insert your fingers between the mask and the LCD panel and pry open the latches starting from the **six top latches**, to the **five latches on each right and left sides**, ending with the **bottom seven latches**.

# TOSHIBA

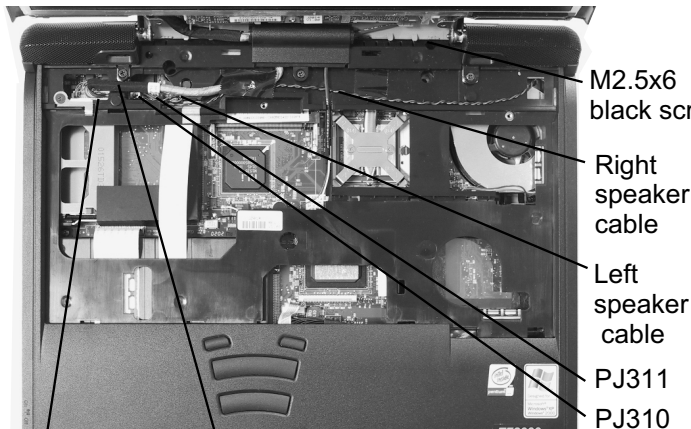
**Tough Enough for Today's World.**

Download service manual and resetter printer at <http://printer1.blogspot.com>

# FIELD REPLACEABLE UNIT DOCUMENTATION

## Satellite™ TE2000

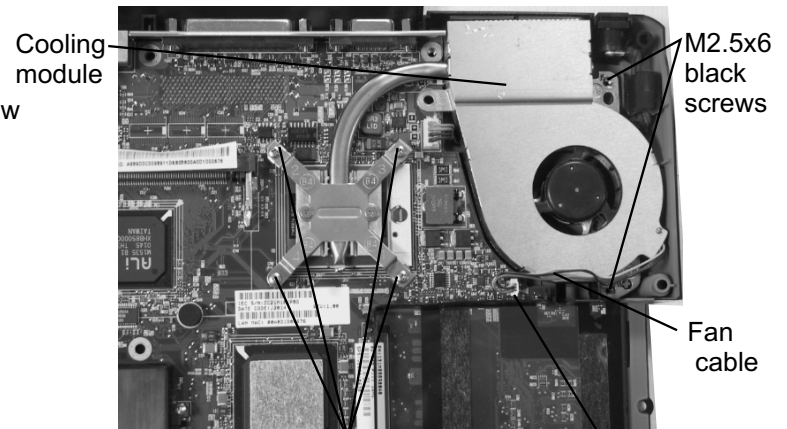
### TOP COVER REMOVAL



PJ34 LCD/FL harness

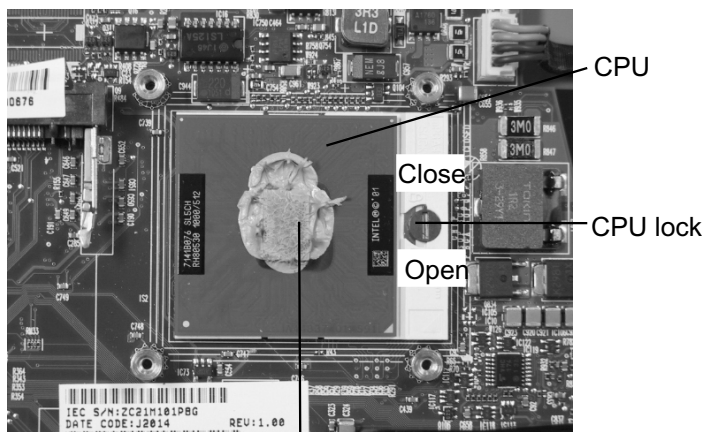
3. Disconnect the **left speaker cable** from **PJ310** and the **right speaker cable** from **PJ311** on the top board.
4. Disconnect the **LCD/FL harness** from **PJ34** and the **IPS membrane switch** from **PJ309** on the system board.
5. Remove **one M2.5x6 black screw** securing the top cover.
6. Lift out the **top cover assembly**.

### COOLING MODULE REMOVAL



1. Disconnect the **fan cable** from **PJ770** on the top board.
2. Remove **four M2x4 brass screws** and **two M2.5x6 black screws** securing the cooling module.
3. Lift out the **cooling module**.

### CPU REMOVAL

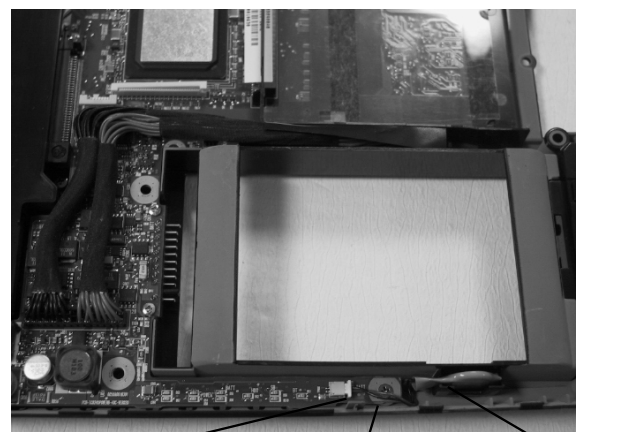


Silicone grease

1. Insert a **flat head screwdriver** in the **CPU lock** and rotate it counter-clockwise to unlock the **CPU**.
2. Lift out the **CPU**.

**NOTE:** When installing the CPU, make sure that a silicone grease is applied before attaching the heat sink. Please refer to FSB-200112 for the complete procedures on how to apply the silicone grease.

### RTC BATTERY REMOVAL



1. Disconnect the **RTC harness** from **PJ5** on the Battery/LED board.
2. Lift out the **RTC battery**.

# TOSHIBA

**Tough Enough for Today's World.**

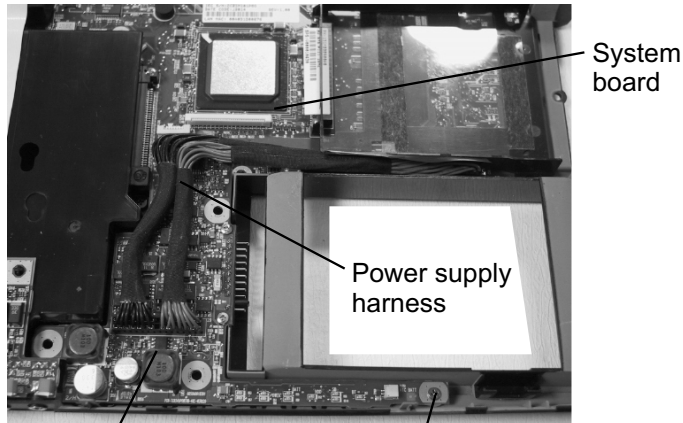
Download service manual and reseter printer at <http://printer1.blogspot.com>



# FIELD REPLACEABLE UNIT DOCUMENTATION

## Satellite™ TE2000

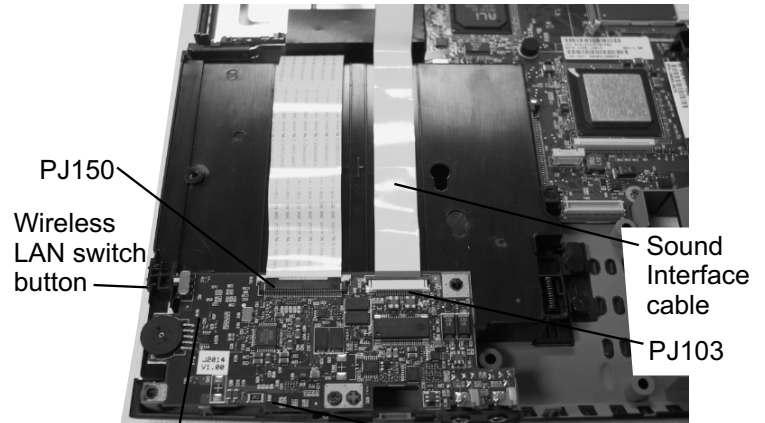
### POWER SUPPLY BOARD REMOVAL



Power supply board M2.5x4 black flat head screws

1. Disconnect the **power supply harness** from **PJ850** and **PJ851** on the system board.
2. Remove **one M2.5x4 black flat head screws** securing the power supply board.
3. Disconnect the **power supply board** from the system board.

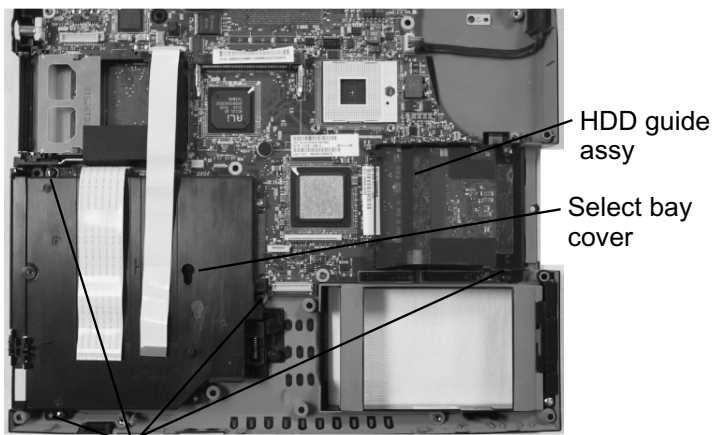
### SOUND BOARD REMOVAL



SD/Sound board M2.5x4 black flat head screw

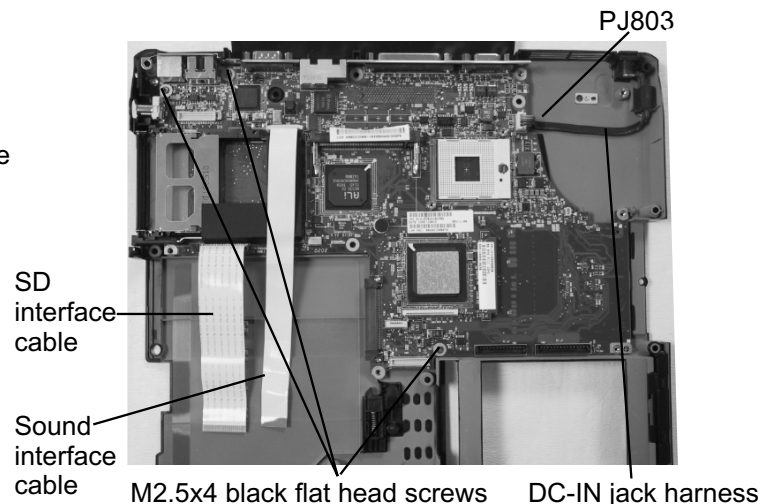
1. Disconnect the **sound interface cable** from **PJ103** and the SD interface **cable** from **PJ150** on the SD/Sound board.
2. Remove **one M2.5x4 black flat head screw** securing the SD/Sound board.
3. Remove the **wireless LAN switch button**.
4. Lift out the **SD/Sound board**.

### SYSTEM BOARD REMOVAL



M2.5x6 black flat head screws

1. Remove **one M2.5x6 black flat head screw** securing the HDD guide assembly and lift out the **HDD guide assembly**.
2. Remove **three M2.5x6 black flat head screws** securing the select bay cover and lift out the **select bay cover**.



3. Disconnect the following cables from the system board:
  - Sound interface cable** from **PJ103**
  - SD interface cable** from **PJ150**
  - DC-IN jack harness** from **PJ803**
4. Remove **three M2.5x4 black flat head screws** securing the system board.
5. Lift out the **system board**.

# TOSHIBA

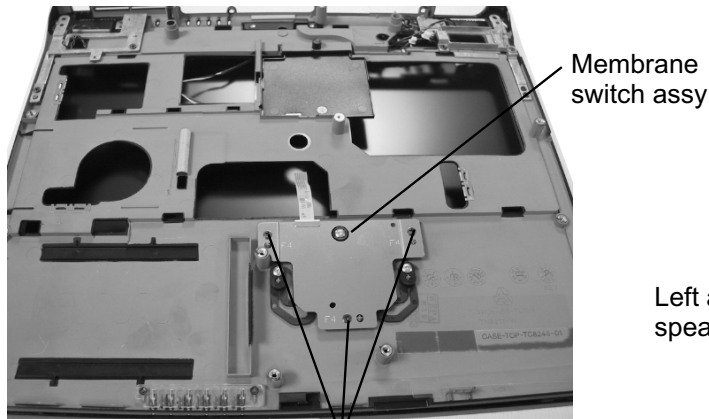
**Tough Enough for Today's World.**

Download service manual and resetter printer at <http://printer1.blogspot.com>

# FIELD REPLACEABLE UNIT DOCUMENTATION

## Satellite<sup>TM</sup> TE2000

### MEMBRANE SWITCH REMOVAL



M2.5x4 black flat head screws

1. Remove **three M2.5x4 black flat head screws** securing the membrane switch.
2. Lift out the **membrane switch assembly**.

### SPEAKERS REMOVAL



M2.5x4 black flat head screws

1. Turn the computer right side up and open the **LCD panel**.
2. Disconnect the **left speaker cable** from **PJ310** and **right speaker cable** from **PJ311** on the system board.
3. Remove **two M2.5x4 black flat head screws** securing the left and right speakers.
4. Lift out the **speakers**.

# TOSHIBA

**Tough Enough for Today's World.**

Download service manual and resetter printer at <http://printer1.blogspot.com>

# FIELD REPLACEABLE UNIT DOCUMENTATION

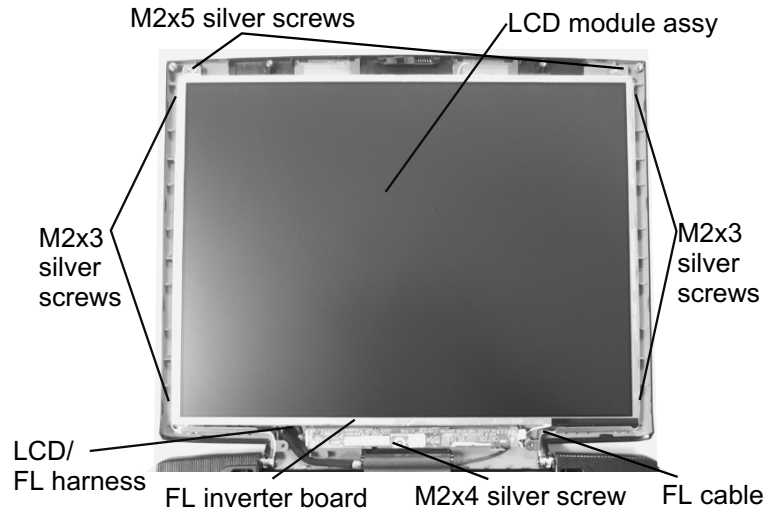
## Satellite™ TE2000

### 14.1" DISPLAY MASK REMOVAL



1. Remove **two mask seals** and **four rubber seals** on the display mask using a pair of fine-tipped tweezers.
2. Remove **two M2.5x6 black screws** and **four M2x5 silver flat head screws** securing the display mask.
3. There are **20 latches** securing the **display mask**. Carefully insert your fingers between the mask and the LCD panel and pry open the latches starting from the **six top latches**, to the **five latches on each right and left sides**, ending with the **bottom seven latches**.

### FL INVERTER AND 14.1" LCD REMOVAL



1. Remove **one M2x5 silver screw** securing the FL inverter board.
2. Carefully lift up the **FL inverter board** and disconnect the **LCD/FL cable** from **CN1** and the **FL cable** from **CN2**.
3. Remove **two M2x5 silver screws** securing the LCD bracket.
4. Remove **four M2x3 silver screws** securing the **LCD module**.
5. Carefully rotate out the top of the **LCD module** enough to access the display cable
6. Disconnect the **LCD/FL cable** from the LCD module.
7. Lift out the **LCD module** and peel off two EMI shield/cushion.

# TOSHIBA

**Tough Enough for Today's World.**

Download service manual and resetter printer at <http://printer1.blogspot.com>